

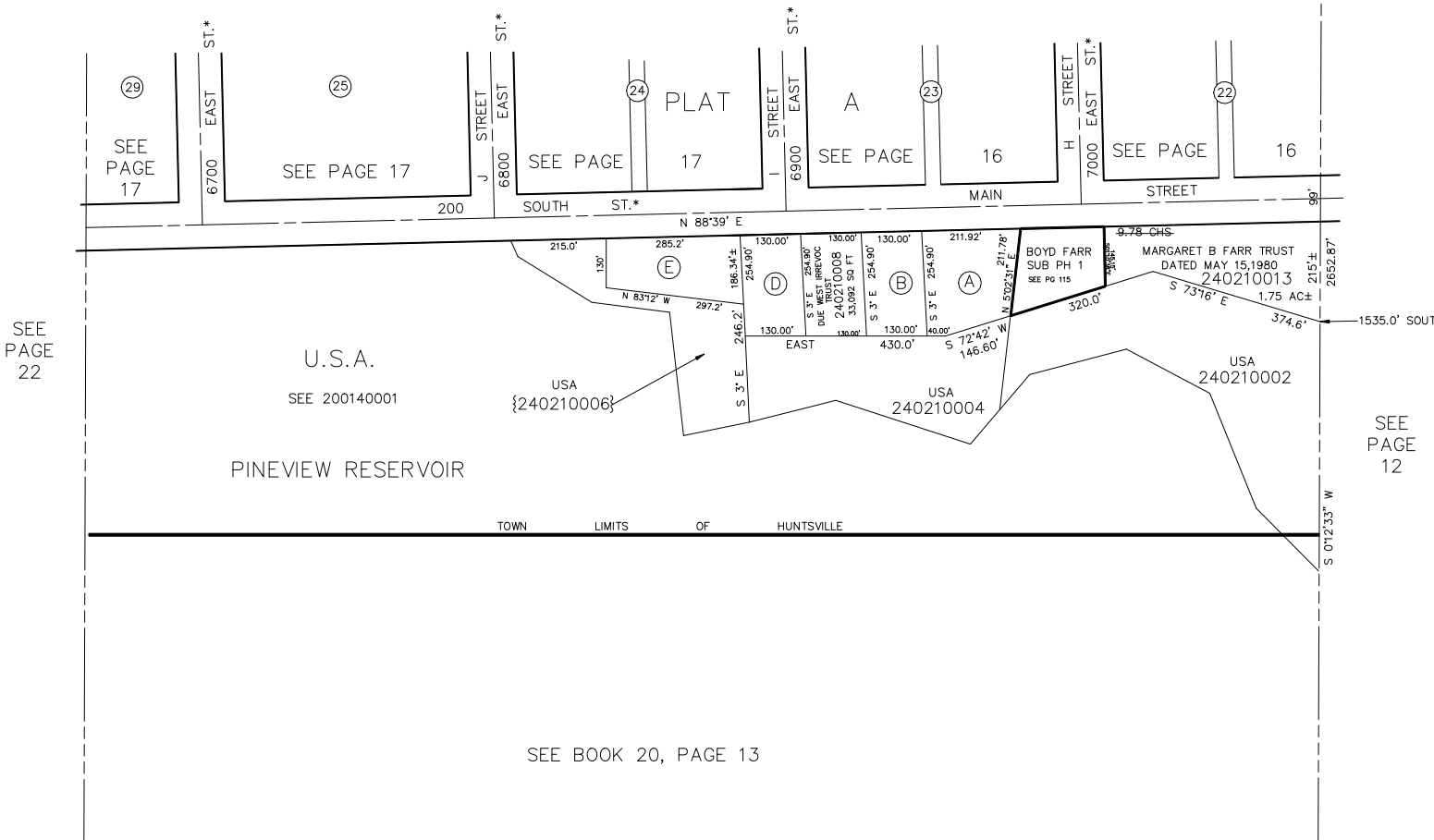
PART OF N.E. 1/4  
SECTION 13, T.6N., R.1E., S.L.B. & M.

IN TOWN OF HUNTSVILLE

SCALE 1" = 200'

TAXING UNIT: 35

N.E. COR OF  
SEC. 13



SEE PAGE 22

SEE PAGE 12

(A)	THE MYRNA HUBERT REVOCABLE TRUST 240210003 1.07 AC±	(B)	RICHARD H MARTY & NANCY E MARTY TRUSTEES 240210009 33,092 SQ FT
(D)	JEFFERY W WELLS & WF TEERAPORN 240210007 33,092 SQ FT	(E)	GLEN ASHTON LLOYD & WF 240210005

\*ADDRESS AFFIDAVIT E#2807996

\*NOTE: STREET NUMBERS ACCORDING TO COUNTY SURVEYOR.